

# Ledger Manager

multipurpose subledger for Sage 300 ERP



## Ledger Manager turns any **account** into a ledger

Now any Sage 300 General Ledger balance sheet account can be a control account with it's own full featured subledger

## How to be **versatile?**

Ledger Manager is the only multipurpose subledger available in the mid-market making Sage 300 the most versatile product in its class. Developed in the Sage 300 Software Development Kit, it is a true, fully integrated Sage 300 module with all the standard features and functionality. So get rid of all those spreadsheets and niche products because now everyone can use Sage 300.



### Creative Concept

Ledger Manager provides a general-purpose "Account" database with separate, best in class "Account Holder" and "Contact" databases and batch processing of Receipt, Payment, Transfer and Journal transactions.



### Outstanding Features

With average daily balance interest calculation, multiple payout/reinvestment options, statement printing, account reconciliation, salesperson commissions, quantities, EFT, tax and more, there's something for everyone



### Market Analysis

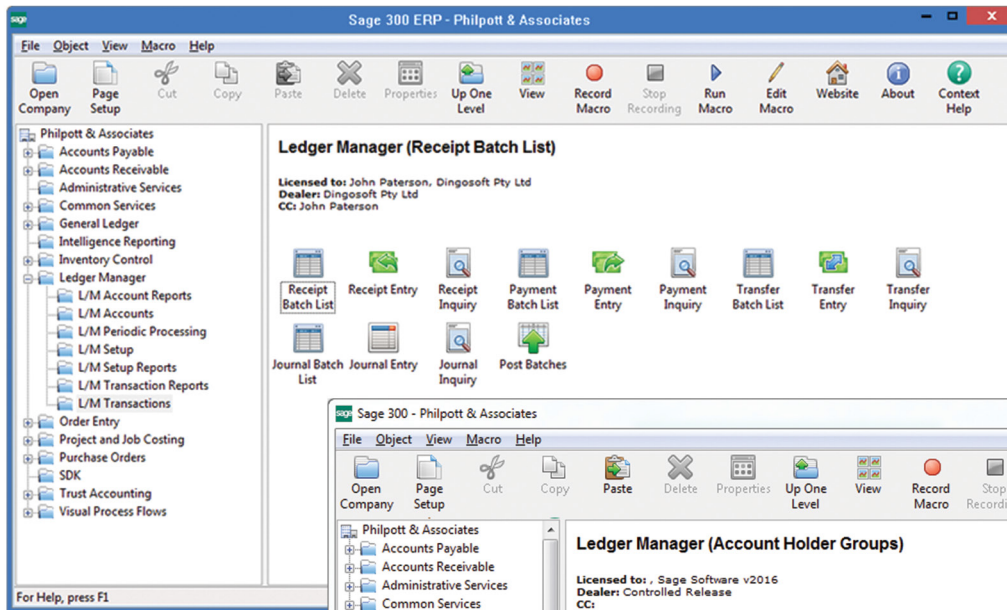
The only other mainstream ERP application with a multipurpose subledger is SAP ERP. Ledger Manager expands the market boundaries of Sage 300 into new verticals with no mainstream, mid-market competition.



### Problem Solver

Ledger Manager provides a solution for everything from simple loan accounts to syndicated loans, investments, pension funds, mutual/hedge funds, even small banks. If A/R or A/P won't do the job, consider L/M.

# Ledger Manager



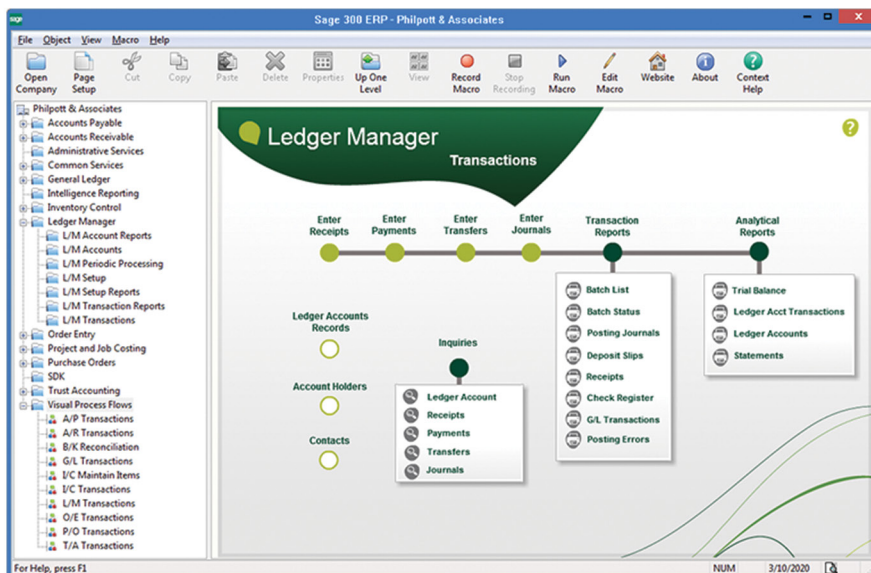
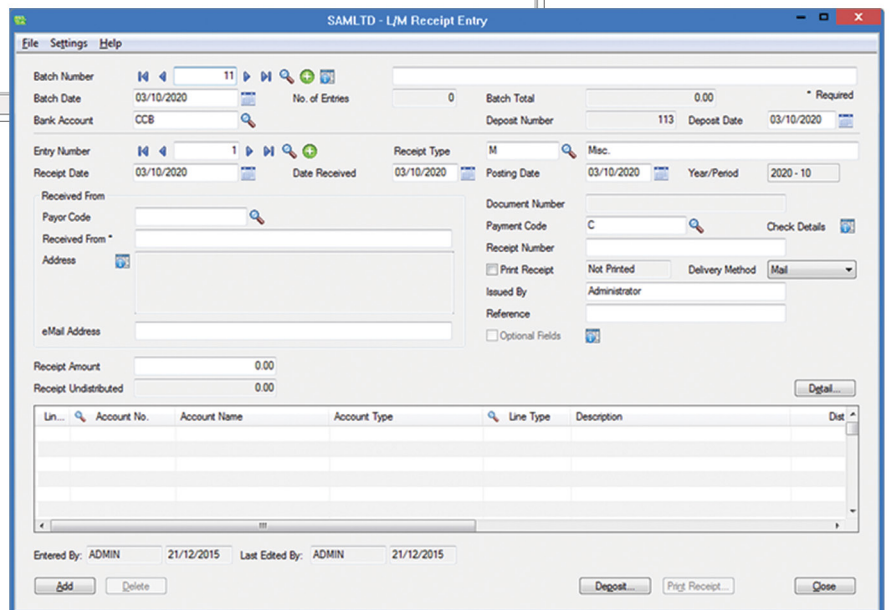
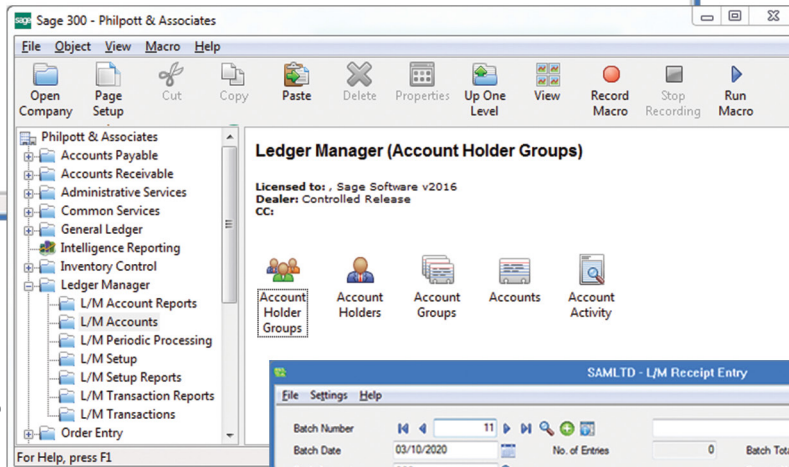
## Accounts / Account Holders / Contacts

Ledger Manager is a full featured Sage 300 module just like A/R or A/P. It follows all the Sage 300 standards so you know where to find everything and how to use it. This makes installation, training and support a breeze. However, instead of "Customers" or "Vendors", Ledger Manager has "Accounts". These accounts can be used for whatever you like. As well as accounts, L/M has a separate "AccountHolder" database so that you can assign multiple accounts to each account holder. All contact information though is stored in "Contact Manager" so that a contact can be attached to multiple account holders (eg: for individual and joint accounts). Accounts hold an amount as well as a quantity balance. Full statement printing functionality included.

## Transactions

Ledger Manager has four types of transactions: Receipts, Payments, Journals and Transfers between accounts. You can also enter a "Transaction Type" code on each transaction to allow you to classify transactions further. Eg: a payment might have a transaction type of "withdrawal" or "interest paid" or "loan". The transaction type also provides a default description for the transaction.

Unlike A/R or A/P though, you don't enter the "Account" in the transaction header. L/M transactions are a bit like G/L entries in that the "Account No." is entered on each detail line of the transaction. This allows you to split any transaction over multiple accounts. The Payee or Payor in the header can be selected from the contact database and could be anyone eg: a broker. All transactions have full Sage 300 functionality eg: bank and tax integration, salesperson split, full multicurrency support, check (cheque), receipt and deposit slip printing, as well as quantities and EFT direct deposits with the optional Dingsoft Quick EFT module.



## Find out more:

Ledger Manager has all the standard Sage 300 functionality like optional fields, import/export and VB macros as well as a number of additional features like average daily balance interest calculation, quantities in transactions and balances, account reconciliation and we are adding more all the time. Contact us to find out if Ledger Manager is right for you:



www.dingsoft.com.au  
 Phone : +61 2 9401 7035 | Fax : 9401 7036  
 Email : info@dingsoft.com.au